

# THE FRATERNITY AND SORORITY POLITICAL ACTION COMMITTEE



SUMMER 2008

## WE'RE MAKING A DIFFERENCE Greeks Significant Player in 2008 Elections

**D**ear Interfraternal Friends,

As I write this letter, we are less than 130 days away from the 2008 election and what should be a fascinating election season. Thanks to your support for Fraternity & Sorority PAC, we are significant players in the 2008 elections. Here's a quick update on the PAC's activities.

### FUNDRAISING AND CANDIDATE SUPPORT

- The PAC is on pace in the 2007-08 election cycle to break the fundraising totals we set in our inaugural 2005-06 election cycle when we raised \$310,311 from 462 donors nationwide. As of June 6, the PAC has raised \$286,466 for the 2007-08 election cycle from approximately 500 donors. We still have almost \$50,000 in outstanding pledges and remain optimistic that we will reach our goal of \$400,000 for the election cycle. We have a great Finance Committee and Board of Directors raising that money and a record number of fraternities and sororities represented on the Finance Committee.
- If the PAC meets its fundraising goals, we should be able to contribute to between 75 and 100 Congressional candidates this cycle on a bipartisan basis. Some of that money will again be directed to Greeks who are first-time candidates for the House and Senate.

### LEGISLATION OF INTEREST TO GREEKS

- Many of you remain interested in the progress of the Collegiate Housing and Infrastructure Act (CHIA) (H.R.643/S.638). As of June 12, the bill had a record number of sponsors—200 in the House of Representatives and 38 in the Senate—thanks to a continued effort by Greeks nationwide to push our elected officials to support this common sense reform for not-for-profit student housing. To give you a sense of just how strong support for CHIA is, you should know that it has more sponsors than 99% of the more than 2,700 other bills pending in the House and Senate Committee with jurisdiction over tax issues. If you see your Senator or Representative, please educate them about CHIA and ask them to help us get it passed this year. We remain optimistic that CHIA might be attached to one of the tax bills moving through Congress this year.

- Congress is expected to finalize the reauthorization of the Higher Education Act this summer after several years of delay. Due to the efforts of the PAC and interfraternal leaders nationwide, we expect the legislation to preserve language that encourages colleges and universities to respect the rights of students to start and join any student organization.

- I'm often asked what's on the horizon for Greek issues in Washington, with an emphasis on finding out "what's next after CHIA passes?" There will be work to do to ensure our freedom of association rights and to defend the Greek experience against a broader culture that often attacks the leadership and personal development experience we offer today's students. Because of the hard work so many Greek leaders have put into this effort over the past few years, we have the ability to play offense and defense in Washington. We only need the leaders to call the next play.

### EVENTS AND ACTIVITIES

- Inside this newsletter is a report on the second annual Congressional Greek dinner held in April. If you haven't come to this amazing interfraternal event, I hope you will consider coming next year.
- The "youth" vote may finally matter in this election cycle and Greek students are one of the most visible segments of that demographic. The PAC Board of Directors has authorized funds to be spent on two virtual "town hall" meetings this fall between Greek students and alumni nationwide and each of the major party Presidential campaigns. We are still working on the details, which we will announce later this summer. Connecting the Presidential campaigns

*(Continued on page 6)*

### THE PAC'S STATUS TO DATE

More than \$286,466 raised in pledges toward 2007-08 cycle goal of \$400,000

Average pledge of \$558 for the current cycle

Approximately 500 contributors from 45 states

Contributions received from members of at least 55 different fraternities and sororities

Remains the largest higher education-focused PAC in the nation

## GREEK VOICES HEARD ON CAPITOL HILL

### Over 400 Meeting with Congressional Offices

From Virginia to California, Tennessee to Texas, 250 sorority and fraternity leaders, including 80 students, converged on Washington, D.C., for the sixth annual Greek visit to Capitol Hill. The event, sponsored by the National Panhellenic Conference (NPC), North-American Interfraternity Conference (NIC) and Capitol Fraternal Caucus, was two days filled with updates, education, and meetings capped off by a Capitol Hill reception for Congressional leaders and staff.

The purpose of the visit was to advance the government relations agenda of the Greek movement and, specifically, to promote two pieces of legislation pending before Congress, H.R.643/S.638 The Collegiate Housing and Infrastructure Act (CHIA) and H.R. 642 The College Fire Safety Act (both discussed elsewhere in this issue).

These leaders participated in over 400 meetings with members of Congress or their staff. As a direct result of this effort, the number of sponsors of CHIA increased dramatically in both the House and Senate. In only the third year to include students as part of the effort, the event had the largest number



*Senator Johnny Isakson (R-GA/Sigma Alpha Epsilon) with ΣAE brothers working on Capitol Hill*



*Senator Elizabeth Dole (R-NC/Delta Delta Delta) with national leaders of Delta Delta Delta.*

of students ever participating. Students were chosen by an application process and sponsored by their national sorority or fraternity organization with some support by related foundations. Most participating organizations brought multiple students to support the effort. The students spent the weekend in training with some opportunities for

sightseeing and were instrumental in the overall success of the visits.

The Greek Hill Visit Day has already been set for April 21, 2009. If you would like to nominate a student to participate or would like to attend yourself, please contact your sorority or fraternity headquarters.

## Congressional Greek Dinner—A Night to Remember

We held our second annual Congressional Greek Dinner on April 15 in Washington, D.C. Two hundred national Greek leaders—students and alumni—were in attendance for the PAC's largest-ever fundraiser. Fifteen Senators and Representatives attended the dinner and each made brief remarks to the attendees about the importance of Greek life in their own lives and their leadership development.

Our Congressional guests included:

Congressman Pete Sessions (R-TX/Pi Kappa Alpha), Congresswoman Stephanie Tubbs Jones (D-OH/Delta Sigma Theta), Congressman Paul Ryan (R-WI/Delta

Tau Delta), Congressman Ike Skelton (D-MO/Sigma Chi), Congresswoman Sheila Jackson-Lee (D-TX/Alpha Kappa Alpha), Congresswoman Shelley Moore Capito (R-WV/Kappa Kappa Gamma), Congressman Zach Wamp (R-TN/Sigma Nu), Congressman Nick Lampson (D-TX/Pi Kappa Alpha), Senator Roger Wicker (R-MS/Sigma Nu), Senator Elizabeth Dole (R-NC/Delta Delta Delta), Senator John Sununu (R-NH/Sigma Alpha Epsilon), Congressman Virgil Goode (R-VA/Lambda Chi Alpha), and Congresswoman Shelley Berkley (D-NV/Delta Zeta).

The event raised \$135,000 for the PAC and included more than 20 student leaders whose seats were paid for by generous PAC donors.



*Senator John Sununu (R-NH/Sigma Alpha Epsilon) addresses guests at the PAC dinner.*



*Senator Roger Wicker (R-TN/Sigma Nu) with national leaders of Sigma Nu and Alpha Omicron Pi*

Be sure to visit our web site at [www.fratpac.org](http://www.fratpac.org) to contribute and learn more about the PAC.



# PAC Forms Student Leadership Council

## Giving Students Direct Voice in the PAC Operations

In April, 80 students visited Washington, D.C., to advocate for policy changes that improve Greek life. They had a chance to meet with and hear from some of the Greek world's biggest supporters in Congress. Having a good understanding of what the Fraternity & Sorority PAC (PAC) is trying to accomplish, several of these young men and women became the first student donors to the PAC. Their support is greatly appreciated and is helping us reach an important fundraising goal.

It is our goal to have 1,000 students nationwide give \$25 each between now and Election Day 2008. That \$25,000 would represent a significant portion of the \$400,000 the PAC hopes to raise this cycle. If we reach this goal in student contributions before Election Day 2008, the PAC will contribute \$1,000 to the scholarship fund of the national fraternity or sorority that had the most student donors. In addition, if the \$25,000 goal is met, the PAC will contribute \$1,000 to the Greek system of the campus that has raised the most money from its student members.

The money that students contribute will help support more candidates in the 2008 election cycle, especially Greek candidates running for Congress for the

first time. In addition, the PAC is pursuing a plan that would allow Greek students nationwide to have a fall 2008 teleconference with leading representatives of both Presidential campaigns. The funds raised by students will help offset the costs of those teleconferences if they occur, and those calls will help demonstrate the political power that college Greeks can bring to the 2008 election cycle.

At a time when college students are increasingly engaged in the political process, the PAC is an important voice for Greek students. With the support of student donors, we can turn up the volume of our voice in the political process and support a wide range of candidates in both parties who believe we should preserve the unique role of Greek life on college campuses.

To become a PAC supporter, visit [www.fratpac.org](http://www.fratpac.org) and click on the donate button. Indicate that you are a student in the field where you are asked to list your graduation year.

Below are comments from some of the students who have already contributed to the PAC.



"It can often be difficult to identify politicians who truly represent the interests and objectives of fraternity life. As such, I decided to become a member of the PAC given its dedication to students, the Greek community, and the ideals I hold most dear."

~ **Mark Fontana, ΦΓΔ**  
**Cornell University**



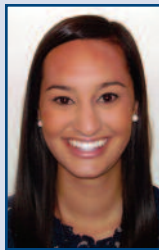
"Having the opportunity to participate in the annual NIC D.C. lobbying trip was an amazing experience. During the past four years, the Pi Kappa Alpha Fraternity has provided me experiences that have created the necessary foundation for success throughout my life. However, this unique opportunity allowed me the chance to give back to not only our beloved Fraternity, but the entire Greek system in a very tangible way."

~ **James Radley, ΠΚΑ**  
**Student Body President,**  
**University of Cincinnati**



"I believe that the Fraternity & Sorority PAC will help draw attention to the issues that are plaguing fraternities and sororities on college campuses across our nation. Furthermore, it is a way for all Greek members to unite, demonstrating that they care about what is going on in our country. I am proud to be a part of a PAC that ensures the Greek community will benefit future Greek members."

~ **Cecilia Velazquez, ΧΩ**  
**University of Washington**



"I joined the PAC because I have a strong desire to contribute to the Greek community. Joining the PAC allows me to help fellow Greeks run for elected offices. The PAC generates a positive image of Greeks that shows us for what we truly are—leaders on our campuses and in our communities who understand and care about the issues."

~ **Noell Sauer, ΚΚΤ**  
**University of New Mexico**



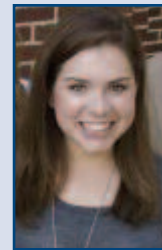
"As an Iraqi Freedom veteran, I understand and value the importance of brotherhood. I believe that this world is much too large and complex for a single person to change, and only through our associations of brotherhood and combined efforts we can we truly make a difference. I believe our PAC is helping do just that."

~ **Christopher Gerritz, ΦΚΨ**  
**Oregon State University**



"Representing the PAC on Congressional Hill was one of my greatest experiences. I was grateful for the privilege to serve the Greek community in our determination for tax-free donations to chapter houses. I recently donated to the PAC to support the cause, knowing my contribution will be well spent."

~ **Tim Sansone, ΚΑ Order**  
**Texas Tech University**



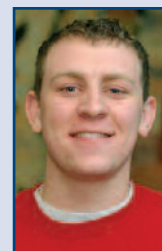
"To me, joining the PAC means I am contributing to the success of the Greek system and its current and future leaders. I know that I am making my mark to help further alumni leaders in Congress and to promote the safety and well-being of current collegiate members. Being a part of the PAC means I am also alongside the entire Greek community in this great effort."

~ **Katherine Tullos, ΑΧΩ**  
**Former Student Body President,**  
**Southern Methodist University**



"I joined the PAC because I've watched it strengthen the Greek presence on Capitol Hill. It also provides opportunities for our students and alumni in D.C. to attend events with direct access to members of Congress. The PAC is starting to make a name for itself as the top higher education PAC in Washington, which is quite an accomplishment, and I hope that all Greek students will want to be a part of that."

~ **Elizabeth Weiner, ΔΓ**  
**Louisiana State University**



"The experience I gained from attending the North-American Interfraternity Conference's Congressional Reception was one of a kind. It completely opened my eyes not only to the world of politics but strengthened my conviction in my fraternal values, as well as motivating myself to get more people involved in this amazing cause."

~ **Matt Schulze, ΣΑΕ**  
**Worcester Polytechnic Institute**

# Fundraising Rankings for Finance Committee Members

As of June 6, 2008

1. Jim Estes/Larry Wiese, KA Order - \$26,750
2. Patrick Alderdice, ΔX - \$25,700
3. Kevin O'Neill/Ted Grossnickle, ΛXA - \$25,575
4. Julie Burkhard, AXΩ - \$16,875
5. Cindy Stellhorn/Laurie Connor, KAΘ - \$14,495
6. Doug Carlson, ΣX - \$14,300
7. Ken File, ΔTA - \$14,275
8. James Owens, ΣN - \$13,250
9. Bill LaForge, ΠKA - \$12,300
10. Elisse Freeman, AΔΠ - \$10,750
11. Marc and Dana Katz, AEF - \$10,661
12. Sarah Lindsay, ΔΔΔ - \$9,190
13. Melanie Shain/Kelly Bingel, XΩ - \$7,725
14. Jerry Wanek, ΦΓΔ - \$7,600
15. Marian Williams, KKG - \$7,400
16. Corey Mathews, TKE - \$6,375
17. Frankie Nordlund, AOP - \$5,700
18. Vicki Nixon, ΔΓ - \$5,645
19. Betty Quick, ΓΦB - \$5,270
20. Ryan Brennan/Craig Casselberry, ΣΦE - \$4,825
21. Mike Scarborough, ΣAE - \$4,050
22. Alan Woody, ΠKΦ - \$3,450
23. Deb Ensor/Shannon Finley, ZTA - \$3,300
24. Kris Bridges, ΦM - \$3,150
25. Julie Johnson, KΔ - \$2,650
26. Liana Wallace, AΓΔ - \$2,225
27. Sheri O'Connell, AΞΔ - \$2,100
28. Wynn Smiley, ATΩ - \$2,000
29. Susan Zabriske, AΦ - \$1,550
30. Scott Wiley/Ed Rodriguez, ΔΣΦ - \$1,500
31. Gwen Mellor, ΠBΦ - \$1,350
32. Jim Blazer, ΦKΨ - \$1,025
33. Cindy Menges, ΔZ - \$750
34. Bernie Schulz, AΣΦ - \$750
35. Amy Krause, ΣΔT - \$630
36. Bob Roberts, ΦΔΘ - \$350
37. Dave Russell, ZΨ - \$20

## 2007-08 PAC Donor Honor Roll

Thank you Greek members for contributing to the Fraternity & Sorority PAC. Your gifts demonstrate your belief in the importance of supporting and legislating Greek issues. Thank you for making a difference in the Greek movement.

### Honorary Board of Directors (\$10,000)

Bill Dreyer, KA Order  
Ned Kirklín, KΞ  
Cindy Stellhorn, KAΘ

### Founders Society (\$5,000 to \$9,999)

Carl Berry, ΣN  
Robert and Donna Chereck,  
ΔTA & AXΩ  
Pris Gerde, KKG  
Keith Krach, ΣX  
Ed Pease, ΠKA  
Kevin and Patty O'Neill,  
ΛXA & AΔΠ

### Charter Members (\$2,500 to \$4,999)

Andy Borans, AEP  
John Fisher, ΔTA  
Elisse Freeman, AΔΠ  
Marny Gilluly, AXΩ  
Marc and Dana Katz,  
AEP & AEF  
James Mountain, ΣAE  
Frankie Nordlund, AOP  
Howard Pickett, ΣN  
Jeanne Reese, ΔΔΔ  
Norval Stephens, ΔTA  
John White, ΦΓΔ

### Legacy Members (\$1,000 to \$2,499)

Daniel Ahlberg, XΨ  
Patrick Alderdice, ΔX  
Nick Allard  
Debbie Allen, KAΘ  
Gregg Behrens, ΛXA  
Christian Berle, ΛXA  
Kelly Bingel, XΩ  
Tom Boggs  
Ryan Brennan, ΣΦE  
Kristin Bridges, ΦM  
Barbara Bromberg, XΩ  
Katie Brown, AXΩ  
Julie Burkhard, AXΩ  
Doug Carlson, ΣX  
Joe Caruso, ΠKA  
Bruce Casner, ΣX  
Craig Casselberry, ΣΦE  
Robert Charles, ΔTA  
Lynn Chipperfield, ΛXA  
Sandra Connor, XΩ  
Elizabeth Corridan, KAΘ  
Patricia Crowley, ΓΦB  
Patty Disque, XΩ  
Mike Duesing, ΦΓΔ  
Kathryn Goddard, AΔΠ  
Marsha Grady, AXΩ  
Pamela Graham, AXΩ  
Claire Brown Gwaltney, AΔΠ  
Craig Haesemeyer, ΣN  
Betty Hamilton  
Greg Hauser, ΔX  
Robert Hayden, ΣX  
Anna Hoehner, AΓΔ  
Charlie Hostetler, ΣAE  
Cheri Jong, ΣK

Richard Jungman, ΦΣK  
KAAPAC  
Darren Kay, KA Order  
Martha Kendrick  
Erin Klein, KKG  
Kevin Knauss, ΠKA  
Bill and Nancy Laforge,  
ΠKA & ΔΔΔ  
Elizabeth Langford, KΔ  
Sarah Lindsay, ΔΔΔ  
Chuck Mancuso, ΔX  
Frank Maresh, KA Order  
Bill Martin, ΦΓΔ  
Laura Mauro, ZTA  
Kevin Mayeux, TKE  
Murray McComas, ΣX  
Cole McDowell, KA Order  
Carolina Mederos, AOP  
Ed Newberry  
Darryl Nirenberg, ΦΔΘ  
Sheri O'Connell, AΞΔ  
Christine Olsen, XΩ  
Ray Orians, ΠKA  
Rosario Palmieri, ΔTA  
Stephanie Peters, ZΦB  
Merlynn Pitcher, AXΩ  
Bob Planck, TKE  
Anne Pogson, AΔΠ  
Betty Quick, ΓΦB  
Todd Reaves, KA Order  
LuAnn Riegl, ΔΔΔ  
Eve Riley, ΔΔΔ  
Ron Roark, ΠKA  
Mark Romig, TKE  
Charles Schmidt, KA Order  
Melanie Shain, XΩ  
Michelle Shimberg, ΔΔΔ  
Wynn Smiley, ATΩ  
Peter and Christina  
Smithhisler, ΛXA & ΣΣΣ  
Donna Stallard, ΦM  
Jerre Stead, ΛXA  
Jesse Stone, ΣX  
Jackie Stutts, AΓΔ  
Suzie Symcox, AXΩ  
Charles Trabold, TKE  
Ken Tracey, ΣAE  
Jerrold Wanek, ΦΓΔ  
Carol Warren, ΠBΦ  
Ted Weise, KA Order  
Robert White, ΣX  
Larry Wiese, KA Order  
Scott Wiley, ΔΣΦ  
Ralph Wilhelm, ΛXA  
Marian Williams, KKG  
Jon Williamson, ΛXA  
Alan Woody, ΠKΦ  
Scott Zajac, ΣΦE

### Honorary Officers (\$500 to \$999)

Gary Anderson, AEP  
Jerry Askew, ΠKA  
Kris Baack, ΓΦB  
Mary Jane Beach, KAΘ  
Brad Beacham, ΣN  
Vicki Bossart, ΔX  
Alan Brackett, ΔTA  
Kevin Brock, TKE  
Kenneth Brown, KA Order



"By preserving, protecting, and promoting our Greek heritage, we help ensure future generations have the same benefits and opportunities that I and so many other individuals have enjoyed."

~ Pris Gerde, KKG

*Pris served as national president of Kappa Kappa Gamma from 2004-06 and is on the PAC Board of Directors.*

William Carlstedt  
Richard Carpenter, AΓP  
Jack Carter, KA Order  
Greg Castanias, ΛXA  
Don Densborn, ΣN  
Denis Dieker  
Deb Ensor, ZTA  
Richard Ernest, TKE  
Jim Estes, KA Order  
Deborah Etheridge, ΔΓ  
William Farkas, ΛXA  
Ken File, ΔTA  
Michael Fishel, AEP  
Ben Fisher, ΣX  
Mark Fites, TKE  
Marilyn Fordham, ΔΓ  
Letitia Fulkerson, XΩ  
Ray Galbreth, ΔX  
Marek Gootman, ΔTA  
Michael Grant, ΣN  
Ted Grossnickle, ΛXA  
Kent Hance, ΔTA  
Lee Hanley, ΦΓΔ  
Kelley Harmon, ZTA  
Brad Hastings, ΣN  
Patrick Haynes, ΠKA  
Jim Host, ΔTA  
Renee Iacona, AΔΠ  
Linda Johnson, ΓΦB  
Phillip Josephson, AΓP  
Karen Ledbetter, KAΘ  
Shari Malone, ΔΓ  
Brian Mann, ΠKA  
Bob Marchesani, ΦKΨ  
Cindy Menges, ΔZ  
Arthur Metcalf, ΣX  
Jean Mrasek, XΩ  
Nicholas Murphy, ΣN  
Vicki Nixon, ΔΓ  
James Owens, ΣN  
Phil Parker, ΛXA  
Edward Rodriguez, ΔΣΦ  
Dennis Santoli, ΣX  
Ben Satcher, KA Order  
Bernie Schulz, AΣΦ  
C. Douglas Simmons  
Joellyn Sullivan, XΩ  
Perry Swanson, ΔTA  
Laura Sweet, ΣΣΣ  
Lorraine Alderman Testa,  
AΔΠ  
Mark Timmes, ΠKΦ  
Idris Rhea Traylor, KA Order

Jidge Verity, ΔTA  
Jeffrey Wahlen, ΠKΦ  
Dick Wilson, KA Order  
Tracy Wolfe, KΔ  
Susan Zabriske, AΦ

### Donors (Up to \$499)

Linda Ablard, AΔΠ  
Amanda Akard, AXΩ  
Mark Allen, ΣΦE  
Alex Alward, ΔTA  
LaDonna Aronoff  
Rod Barleen, ΔY  
Mary Barlow, ΔΓ  
Jo Baughman, ΔΔΔ  
Lee Beauchamp, ΣX  
Andrea Bechtel, XΩ  
Sanford Belden, AΓP  
Richard Bennet, ΣΦE  
Brian Bernardoni, ΔΣΦ  
Sam Bessey, XΨ  
Bob Biggs, ΦΔΘ  
Ron Binder, ΣΦE  
Cheryl Blankenship, ΔΓ  
Sharon Block, AEF  
Sam Blustein, AEP  
Kendra Bocher, ΓΦB  
Barbara Boersma, ΔΓ  
Cornelius Boersma, ΦKΨ  
Tricia Bradley, ΔΓ  
Ann Braly, ΣΔT  
Jonathan Brant, BΘΠ  
Lindsay Braverman, ΣΔT  
Barbara Britt, AXΩ  
Leslie Brown, ΣΔT  
Martha Brown, ΔΓ  
Russell Brown, KA Order  
Lana Bulger, ΦM  
Barbara Bull, ΔΔΔ  
Gary Bunn, ΣΦE  
Sandy Burba, ΓΦB  
Timothy Burke  
Brenda Butler, ΠBΦ  
Jason Butler, ΔX  
Thomas Calhoun, ΔTA  
Ann Campbell  
Michelle Carlson, ΣΔT  
Marvin Carver, ΦΓΔ  
Anne Charnock, AΔΠ  
Mary Clancy, ΣK  
Jackye Clark, ΔΔΔ  
Janice Clifford, ΠBΦ



Kenneth Lawrence Clinton, ΔΤΔ  
Cathy Coers Frank, ΧΩ  
Jennifer Cohen  
Scott Cohon, ΑΕΠ  
Linda Collier, ΑΟΠ  
Jamie Collins, ΣΣΣ  
Crystal Combs, ΑΟΠ  
Laurie Connor, ΚΑΘ  
Cari Cook, ΔΔΔ  
Buddy Cote, ΦΓΔ  
Doug Cowan, ΠΚΑ  
Kendall Cusick-Rendone, ΚΑΘ  
Ratheen Damle, ΔΧ  
Susan Danko, ΑΟΠ  
Paula Danoff, ΔΔΔ  
Patricia Davis  
Tom Davis, ΑΓΡ  
Bill Dean, ΦΔΘ  
Ben DeLost, ΦΚΘ  
Shelly Dobek  
Mike Duncan, ΚΑ Order  
Lynn Dunlap, ΔΔΔ  
Michael Dunn, ΣΧ  
Ben Dupuy  
Brett Dyess, ΔΤΔ  
Daniel Earley, ΔΤΔ  
Diane Eggert, ΦΜ  
Debbie Eleftheriou, ΣΔΤ  
Jill Ellermeyer  
Lauren Elliott, ΚΑΘ  
Zita Enloe, ΚΑΘ  
Debbie Evans, ΔΓ  
Jacque Everson, ΔΓ  
Robin Fanning, ΦΜ  
Michael Fimiani, ΦΔΘ  
Gayle Fitzpatrick, ΑΟΠ  
Mary Ellen Fitzsimonds, ΚΑΘ  
Christi Flynn, ΔΔΔ  
Marjorie Fogarty, ΔΓ  
Mark Fontana, ΦΓΔ  
Aaron Forehand, ΔΤΔ  
James Foster, ΚΑ Order  
Kate Fowler, ΚΑΘ  
Matthew Frazier, ΣΝ  
JoAnne Fredericks  
Meghan Freeman, ΚΔ  
Deborah Friedman, ΑΕΦ  
Frederick Fritz, ΣΑΕ  
Mary Ann Fruge, ΧΩ  
Susan Fussell

Mike Geary, ΔΧ  
Morgan Gerard, ΑΕΦ  
Christopher Gerritz, ΦΚΨ  
Charles "Bryce" Giesler, ΣΦΕ  
Bob Gingras, ΣΝ  
Stu Gittleman, ΔΦ  
Jennifer Godar, ΧΩ  
J.B. Goll, ΦΓΔ  
Thomas Goodale, ΣΑΕ  
Wendy Goshert, ΚΑΘ  
Marissa Gottfried, ΣΔΤ  
Heather Granato, ΚΑΘ  
Robert Grant, ΒΘΠ  
Sarah Grant, ΑΦ  
Daniel Greenspan, ΑΕΠ  
Alison Griffin, ΔΔΔ  
Gary Griffith, ΣΦΕ  
Caroline Groom, ΠΒΦ  
Beth Gruber, ΣΔΤ  
Rachelle Hadland, ΚΑΘ  
Melissa Hall, ΔΔΔ  
Kyle Handegard, ΚΑΘ  
Robert Hankins, ΣΦΕ  
Marie Hannon, ΚΑΘ  
Margaret Harris, ΚΑΘ  
Leah Hartman  
Susie Harwood, ΓΦΒ  
Dinah Hays, ΔΓ  
Chad Heflin, ΛΧΑ  
Kristin Hellquist, ΚΑΘ  
Edwin Heminger, ΔΤΔ  
Richard Hester  
Maureen Hollmeyer, ΔΓ  
Richard Hopple, ΣΑΕ  
Tom Horowitz, ΔΧ  
Penny Horton, ΔΓ  
Bret Hrbek, ΖΒΤ  
Barbara Hurt-Simmons  
Pam Jamieson, ΔΓ  
Brandon Jang  
Allan Johnson, ΑΓΡ  
Benny Johnson, ΤΚΕ  
Julie Johnson, ΚΔ  
O.K. Johnson, ΔΤΔ  
Annabel Jones, ΓΦΒ  
Carole Jones, ΑΟΠ  
Robert Joseph, ΣΧ  
Howard Kahn, ΤΚΕ  
Kelly Karnes, ΣΣΣ  
Amy Kates  
Emilee Katzer, ΧΩ  
Paula Kendrick, ΑΔΠ

Eric Kerstetter, ΔΧ  
Laurie Kight, ΔΓ  
Matt Killingsworth, ΔΧ  
Michael King, ΣΧ  
Suzanne King, ΚΑΘ  
Kathryn Kish, ΑΓΔ  
Felicia Kolodner, ΣΔΤ  
Laura Koopman, ΣΔΤ  
Robert Kraft, ΔΤΔ  
Amy Krouse, ΣΔΤ  
Richard Kuerston, ΧΦ  
Melanie Doyle Lampertz, ΑΟΠ  
Don LaPlante, ΔΧ  
Janice Rae Lawson, ΚΑΘ  
Caroline Lazzara, ΑΟΠ  
Sam Leake, ΚΑ Order  
Beverly LeBoeuf, ΔΓ  
Virginia Levy  
Faron Lewitt, ΖΒΤ  
Shawn Lichaa, ΑΕΠ  
Lindsay Lieberman, ΣΔΤ  
Libby Lindahl, ΚΔ  
Debra Link, ΔΓ  
Heidi Locker-Scheer, ΚΑΘ  
Chickie Loewenstein, ΣΔΤ  
Kim Looney, ΚΑΘ  
Jeffrey Love  
Leisa Lowrey, ΠΒΦ  
Eric Lynn, ΣΧ  
Tracy Maddux  
Rae Maier, ΠΒΦ  
Laura Malley-Schmitt, ΑΦ  
Linda Malony, ΓΦΒ  
Kim Manin, ΣΔΤ  
Ronald Marmar, ΦΓΔ  
Carmela Martini, ΔΓ  
Corey Mathews, ΤΚΕ  
Martin Massengale, ΑΓΡ  
Gregory McElroy, ΖΨ  
Linda McLinden, ΔΔΔ  
Sarah McCullom, ΖΤΑ  
Michael McGill, ΚΣ  
Bob McKenney, ΑΤΩ  
Brooke McKinney, ΚΚΓ  
John McNeil  
Duane Meyer, ΔΧ  
Amy Miller, ΑΕΦ  
Bob Miller, ΦΔΘ  
Robert Miller, ΑΓΡ  
Victoria Miller, ΚΚΓ  
Karen Mills, ΖΤΑ  
Andrea Mindel, ΑΕΦ

Karla Mugler, ΔΓ  
William Muir, ΑΤΩ  
Meg Murer, ΔΔΔ  
William Muse, ΤΚΕ  
David Nagel, ΔΤΔ  
Lisa Niedenthal, ΑΟΠ  
Candace Nixon, ΔΓ  
Vanessa Nixon, ΔΓ  
Carol Nunnally, ΔΓ  
Linda O'Bryant, ΔΔΔ  
Bruce O'Donoghue, ΑΤΩ  
Katherine Oldham, ΚΑΘ  
Doug Opicka, ΦΚΣ  
Robert Orr, ΦΓΔ  
Aaron Otto, ΔΧ  
Jared Paserman, ΑΕΠ  
Amy Peterson, ΓΦΒ  
Ann Phy, ΠΒΦ  
Tammie Pinkston, ΑΔΠ  
Angie Plunkett, ΑΧΩ  
Barb Plutko  
Charles Poore, ΦΔΘ  
Sharon Popp, ΧΩ  
Joe Poston  
Miles Powers, ΦΚΤ  
Barbara Probst, ΔΓ  
Liz Purdy, ΔΔΔ  
Tony Quandt, ΔΤΔ  
Stephen Ratterman, ΣΝ  
Deb Raziano, ΔΖ  
Michelle Reda  
Kevin Reilly, ΘΧ  
L'Cena Rice, ΓΦΒ  
Keeley McDonald Riddle, ΖΤΑ  
Mike Riley, ΠΚΑ  
Elizabeth Appel Rinck, ΚΑΘ  
Lisa Ripley  
Rudy Ristich  
James Roach  
Larry Robb, ΚΑ Order  
Ben Robinson, ΦΓΔ  
Mark Rogers, ΚΑ Order  
Loretta Roselle, ΔΓ  
Max Rosenberg, ΑΕΠ  
Erica Rozetti, ΔΓ  
Brad Rukes, ΣΦΕ  
Hannah Salter, ΣΣΣ  
Connie Sandler, ΑΕΦ  
Timothy Sansone  
Elana Satisky, ΣΔΤ  
Noell Sauer, ΚΚΓ  
Beth Saul, ΑΕΦ  
Michael Scarborough, ΣΑΕ  
A. Edward Scherer, ΑΕΠ  
Eric Schmidt, ΚΑ Order  
Mark Schramka, ΔΧ  
Matthew Schulze, ΣΑΕ  
Jason Scott  
Elizabeth Searcy, ΔΓ  
Aaron Seiden, ΣΑΕ  
Lindsay Sell, ΚΑΘ  
Will Shier, ΦΓΔ  
Jayme Shilkrot, ΣΔΤ  
Erik Showalter, ΚΑ Order  
Stephen Siders, ΑΤΩ  
Randi Siegel, ΣΔΤ  
Steven Sikorski



*Congresswoman Shelley Moore Capito (R-WV/Kappa Kappa Gamma) with national leaders of Kappa Kappa Gamma*



*Congressman Ike Skelton (D-MO/Sigma Chi) with Sigma Chi brothers*

Scott Silberfein  
Caren Silverman, ΣΔΤ  
Stephen Simo, ΚΔΦ  
Daniel Singer, ΑΕΠ  
Cheryl Sizer, ΚΔ  
Kristin Slawter, ΚΚΓ  
Jeremy Slivinski, ΑΚΑ  
Daniel Smercina, ΔΣΦ  
Carol Cotton Smith, ΑΟΠ  
Justin Smith, ΔΤΔ  
Christa Dell Sobon, ΚΑΘ  
Lee Solomon, ΑΕΠ  
Herb Songer, ΤΚΕ  
James Spooner, ΑΤΩ  
Jason St. John, ΣΦΕ  
Richard H. Stein, ΑΕΠ  
Carol Stevenson, ΑΟΠ  
Mark Still  
William Stoffer, ΣΝ  
Janette Strickland, ΓΦΒ  
Nancy Strine, ΠΒΦ  
Bill Tallman, ΔΧ  
Craig Templeton, ΣΦΕ  
Drew Thawley, ΑΣ  
Alan Thayer, ΦΓΔ  
Kristin Thomas, ΔΓ  
Jace Thompson, ΣΦΕ  
Kathleen Tonkel, ΚΑΘ  
Marcia Treby, ΣΔΤ  
Nancy Truesdale, ΓΦΒ  
Katherine Tullos, ΑΧΩ  
Trent Unterbrink, ΔΧ  
Joseph VanName, ΚΑ Order  
Cecilia Velazquez, ΧΩ

Cindy Visot, ΑΟΠ  
Victoria Vohs, ΓΦΒ  
Stacey Voigt, ΖΤΑ  
Robert Voigtmann, ΑΕΠ  
Dian Poole Volkmer, ΑΟΠ  
Tom Wade, ΠΚΑ  
Sarah Wagaman, ΑΟΠ  
J.J. Wales, ΚΚΓ  
Liana Wallace, ΑΓΔ  
DeWitt Waltmon, ΦΓΔ  
Susan Ward, ΦΜ  
Bonnie Warren, ΚΔ  
David Warren, ΚΑ Order  
Larry Warren, ΑΓΡ  
Ashley Warrington, ΑΔΠ  
Miles Washburn, ΔΧ  
Charles Watson, ΦΓΔ  
Robert Denny Watt, ΦΓΔ  
Elizabeth Weiner, ΔΓ  
Jeanette Weiner, ΔΓ  
Clark Wellborn  
Marty Wiglesworth, ΣΑΕ  
Rosalyn Williams, ΑΔΠ  
Tracey Williams, ΔΓ  
Greg Woodson, ΤΚΕ  
Amy Woodward, ΔΔΔ  
Dudley Woody, ΠΚΦ  
Mike Woolbright, ΔΧ  
Bonnie Wunsch, ΑΕΦ  
Lisa Zavodsky, ΚΑΘ  
John Ziegelmeyer, ΦΚΨ  
John Ziegler, ΔΧ



"I support the Fraternity & Sorority PAC because I believe in the Greek experience and understand that issues impacting Greek-letter organizations need representation in Washington, D.C. Whether it is housing today or rights of association tomorrow, a voice and opportunity to influence policy are needed."

~ Ned Kirklín, ΚΣ

Ned is the managing director of HRH/Kirklín & Co., which provides insurance and risk management to fraternities, student housing, and sororities.

*Federal law requires us to use our best efforts to collect and report the name, address, occupation and name of employer of each individual whose contributions aggregate in excess of \$200 in a calendar year.*

*Contributions are not tax deductible for federal income tax purposes. The maximum an individual may contribute is \$5,000 per calendar year. Corporations and foreign nationals without green cards are prohibited from contributing.*

# 2008 PAC BOARD OF DIRECTORS



## THE FRATERNITY AND SORORITY POLITICAL ACTION COMMITTEE

P.O. Box 3435  
Alexandria, VA 22302

*Address Service Requested*

PRSR  
FIRST CLASS  
U.S. POSTAGE  
PAID  
LAWRENCE, KS  
PERMIT #570

President  
**Kevin O'Neill, ΔΧΑ**

President-Elect  
**Larry Wiese, KA Order**

Vice President  
**Julie Burkhard, ΑΧΩ**

Secretary  
**Sarah Lindsay, ΔΔΔ**

Treasurer  
**Cindy Stellhorn, KAΘ**

Co-Chairman  
PAC Finance Committee  
**Ken File, ΔΤΑ**

Co-Chairman  
PAC Finance Committee  
**James Owens, ΣΝ**

General Directors  
**Patrick Alderdice, ΔΧ**  
**Ryan Brennan, ΣΦΕ**  
**Doug Carlson, ΣΧ**  
**Jim Estes, KA Order**  
**Pris Gerde, ΚΚΓ**  
**Marc Katz, ΑΕΠ**

*Special thanks and acknowledgment to our friends in Greek-related businesses who are leading donors to the PAC, including Cindy Stellhorn, Ned Kirklin, Richard Jungman, Patrick Alderdice, and Barbara Bromberg.*

## Significant Player in 2008 Elections

*(Continued from page 1)*

with the organized student leaders on today's campuses will help increase the political power of Greek students in the future. Check [www.fratpac.org](http://www.fratpac.org) for more details on how you can participate.

- In early June, the PAC launched a micro-giving program aimed at asking current Greek students to donate \$25 to the PAC and expand our giving rolls. We have more than 20 members of our Student Leadership Council—students who came to lobby Congress in the past year on Greek issues and were charter student contributors to the PAC this summer—and we hope to greatly expand our number of student donors this year.

in thanking each of them for their outstanding efforts on behalf of the PAC this cycle.

Thanks again for your support. Enjoy this issue of the PAC newsletter and feel free to visit our Web site at [www.fratpac.org](http://www.fratpac.org). Please share the newsletter and Web site with your Greek friends and ask them to join you as a contributor to the PAC this election year.



Sincerely,  
**Kevin O'Neill**  
President  
Fraternity & Sorority PAC  
(757) 207-6002  
[info@fratpac.org](mailto:info@fratpac.org)



*Congressman Paul Ryan (R-WI/Delta Tau Delta) with Congresswoman Stephanie Tubbs Jones (D-OH/Delta Sigma Theta) and Congressman Pete Sessions (R-TX/Pi Kappa Alpha)*

- I'm pleased to announce the PAC Board of Directors has initiated a long-term leadership rotation plan that is already in effect. Larry Wiese, a member of Kappa Alpha Order, will become the PAC's second president in April 2009. We expect that Julie Burkhard, a member of Alpha Chi Omega, will become the PAC's third president in April 2010. In addition to Larry and Julie, we are blessed with a deep roster of interfraternal leaders who are contributing to the growth of the PAC and are committed to moving us forward in the future. I hope you will join me

## Did You Know Fraternal Groups Are...

- the nation's largest not-for-profit student landlord with one out of every eight college students living in Greek housing?
- the largest, most visible, and most active values based organizations on college campuses?
- the most successful leadership development program for college students?
- the nation's largest network of young volunteers?